

Texas Bird BINGO

BIG BEND REGION



HOW TO PLAY: As you see the bird(s) identified on the card, tag them with an "X" or some other mark. Cover a row of birds in any of three directions (horizontally, vertically or diagonally) and you've got a Bird Bingo! Email your completed Bird Bingo card to bigbend@texasbirdbingo.com for a chance to win a birding excursion with a Texas Audubon master birder. For complete rules and information, visit texasbirdbingo.com

Audubon | TEXAS



ACORN WOODPECKER



BLACK-THROATED SPARROW



VERMILION FLYCATCHER



SUMMER TANAGER



CACTUS WREN



NORTHERN MOCKINGBIRD



PAINTED BUNTING



BLACK-CHINNED HUMMINGBIRD



BELL'S VIREO



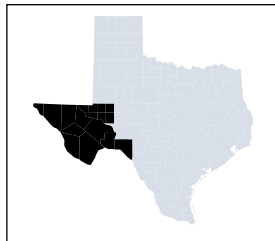
BLUE GROSBEAK



BLACK PHOEBE



BUSHTIT



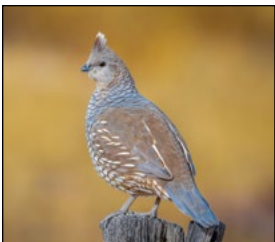
BIG BEND REGION



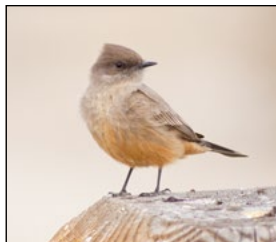
CHIHUAHUAN RAVEN



CURVE-BILLED THRASHER



SCALED QUAIL



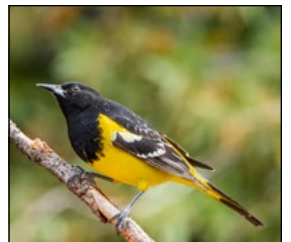
SAY'S PHOEBE



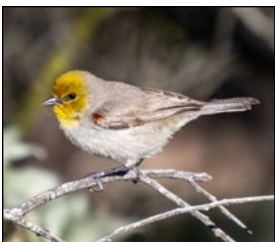
LOGGERHEAD SHRIKE



PYRRHULOXIA



SCOTT'S ORIOLE



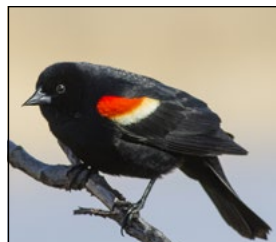
VERDIN



BURROWING OWL



YELLOW-RUMPED WARBLER



RED-WINGED BLACKBIRD



PHAINOPEPLA



BIRD BINGO IDENTIFICATION GUIDE

Courtesy of Audubon Texas

ACORN WOODPECKER

9" (23 cm). Black above and on chest, red cap, strong face pattern, white eyes. In flight, shows white rump, small white wing patch. Female has black bar separating red cap from white forehead.

BELL'S VIREO

4 3/4 -5" (12-13 cm). Confusingly plain, with dull wing-bars, indistinct eye-ring. Note bill shape, rather long-tailed look. Gray Vireo, even more colorless, has stronger eye-ring.

BLACK PHOEBE

6-7" (15-18 cm). Mostly dark charcoal gray, blacker on head, with white belly. Note slim shape, upright posture. Often dips tail down and then up while perched. Juveniles in summer have rusty edges on wing and back feathers.

BLACK-CHINNED HUMMINGBIRD

3 3/4" (10 cm). Purple band below male's black chin is hard to see; more obvious is white collar below that. Female almost identical to female Ruby-throated Hummingbird; told from similar hummers in west by long bill, pale underparts, callnotes. Flips and spreads tail actively while hovering.

BLACK-THROATED SPARROW

5 1/4" (13 cm). Black throat and mask set off by white eyebrow and whisker stripes. Plain gray-brown above, with narrow white tail edge and corners. Juvenile has white throat, streaked chest; suggests Sagebrush Sparrow but has stronger white eyebrow.

BLUE GROSBEAK

6-7 1/2" (15-19 cm). Very thick bill, wide buff or cinnamon wing-bars. Male very

dark blue, female warm brown. Indigo Bunting slimmer, has smaller bill, lacks obvious wing-bars; female Indigo has streaks or mottling on chest.

BURROWING OWL

9" (23 cm). Recognized by its long legs, barred underparts, terrestrial habits. Juveniles plainer below.

BUSHTIT

3 3/4-4" (10 cm). Tiny, plain, with small bill, longish tail. Females have pale eyes, males dark eyes. Head browner on coastal birds. Young males in west Texas may have black ear patches. Often in large flocks in open woods.

CACTUS WREN

8 1/4" (21 cm). More boldly barred, striped, and spotted than other desert birds, with sharp white eyebrow. Compare to Sage Thrasher. Juvenile has less spotting on chest.

CHIHUAHUA RAVEN

19-21" (48-53 cm). Shape of Common Raven but slightly smaller, with smaller bill, different voice. Usually in open grassland (in southwest, Common Raven is mostly in mountains or in drier cactus desert).

CURVE-BILLED THRASHER

9 1/2 -11 1/2" (24-29 cm). Mostly dull gray-brown. Moderately curved black bill; yellow-orange eyes. In east part of range (Texas), tends to have more obvious chest spots. Juvenile has shorter bill, sharper spots on upper chest.

LOGGERHEAD SHRIKE

8-10" (20-25 cm). Slim, perches horizontally. Black mask, black wings and tail with white markings visible mostly in flight. Juvenile has very narrow gray barring. In cold climates, compare to Northern Shrike.

NORTHERN MOCKINGBIRD

9-11" (23-28 cm). Slim and long-tailed. Pale gray with white wing patches (mainly

visible in flight), white outer tail feathers. Juvenile has dark streaks on chest, darker eyes than adult.

PAINTED BUNTING

5 1/2" (14 cm). Adult male unmistakable with blue head, red throat and chest, bright green back. Female plain green, with no markings. Other small greenish birds have thinner bills, or show marks such as wing-bars. Juveniles are much grayer than adult females at first.

PHAINOPEPLA

7-7 3/4" (18-20 cm). Slim and long-tailed, with spiky crest, red eyes. Male glossy black; white wing patches show mainly in flight. Female gray with paler wing edgings.

PYRRHULOXIA

7 1/2-8 1/2" (19-22 cm). Male gray and red, female buff with slight red tinges, with thin spiky crest. Separated from female Northern Cardinal by bill shape and color: thick, curved, stubby bill is dull yellow to yellow-orange.

RED-WINGED BLACKBIRD

7-9 1/2" (18-24 cm). Male's shoulder patches can be obvious (especially in song display) or mostly hidden by body feathers. Patches usually bordered yellow, but in central California ("Bicolored Red-wing"), these can be all red. Females and young very different, streaky brown with buff eyebrow. Resemble sparrows but have different behavior, spikier bill, darker lower belly.

SAY'S PHOEBE

7-8" (18-20 cm). Soft dusty gray, with pale orange-buff belly, black tail. Wags tail like other phoebes. (Note: in regions with red soil, Eastern Phoebe can have belly stained orange like Say's, but it shows much more contrast on the face.)

SCALED QUAIL

10-12" (25-30 cm). Blue-gray overall, with fluffy white crest ("cottonop" is one nickname). Dark edges on gray body

feathers create scaled look. Sexes very similar, but female may have shorter crest.

SCOTT'S ORIOLE

7 1/2-8 1/4" (19-21 cm). Brilliant black-and-yellow male unmistakable in range; note black upper back, yellow on rump and in base of tail. Female dusky yellow-green, darker and larger than female Hooded or Orchard Orioles. Older females and young males may have much black on head.

SUMMER Tanager

7-8" (18-20 cm). Adult male bright rosy red all year. Young males may be patchy yellow and red. Female rich yellow, less greenish than female Scarlet; note large pale bill, plain wings.

VERDIN

4-4 1/2" (10-11 cm). Very small, mostly gray, long-tailed. Adults have some yellow on head, red on shoulder (often hidden). Juvenile plain gray; suggests Bushtit, but has pale bill base, different habitat and voice, and is never in flocks.

VERMILION FLYCATCHER

6" (15 cm). Male's pattern unmistakable, with black back and wings, red crown and underparts (compare to Scarlet Tanager). Female and young mostly gray and white with faint streaks on chest, wash of pink or yellow on belly; note tail-dipping habit.

YELLOW-RUMPED WARBLER

5-6" (13-15 cm). Both types have bright yellow rump patch (obvious as bird flies away), white spots in tail, small yellow patch at side of chest. Eastern "Myrtle Warbler" has white throat (may be dull buff in some young birds) wrapping up behind well-defined dark cheek patch. Western "Audubon's Warbler" has yellow throat, plainer face. In both forms, pattern is brightest on spring males, dullest on young females in fall and winter.



Del Rio offers great diversity for bird watchers. For bird watching in Del Rio, head over to the Duck Pond, Laguna de Plata, San Felipe Creek, and near the Val Verde Winery in South Del Rio. At Lake Amistad, check out Spur 454, Spur 406, Hunting Area #1, and Bosque along the Rio Grande. For more information on Explore Del Rio, go to www.exploredelrio.com

FOR MORE BIRDING AND OUTDOOR CONTENT, SUBSCRIBE TO TEXAS PARKS & WILDLIFE MAGAZINE FOR ONLY \$2/MONTH! SCAN THE QR CODE BELOW TO SUBSCRIBE.

Scan this QR code to download our **Birds of the Trans-Pecos Field Checklist**



Scan this QR code to download the **Birds of the Edwards Plateau Field Checklist**

